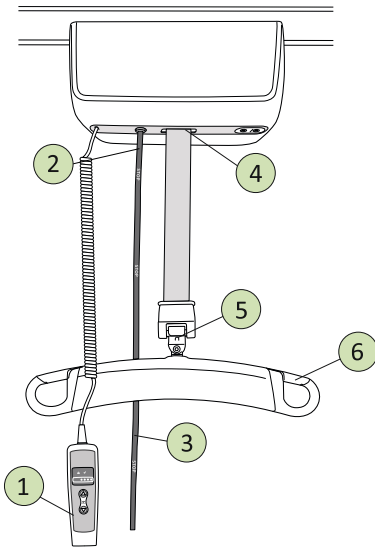


# Likorall Overhead Lift

## Quick Reference Guide

English



189405Rev.1EN\_ES

### Safety Instructions

⚠ This warning symbol indicates that special care should be taken. If instructions are not followed there is a risk of serious injury to patient or caregiver.

⚠ Read the user manuals for the lift and lifting accessories before use.

- Plan every transfer situation carefully.

⚠ Before the patient is lifted from the underlying surface, but after the straps have been fully extended, make sure the straps are properly connected to the sling bar.

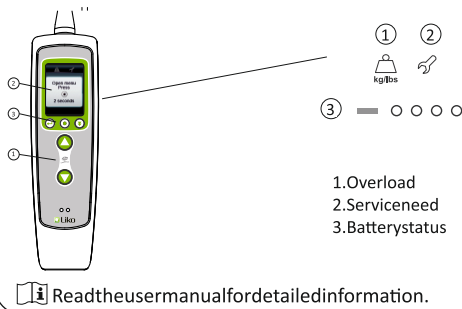
- **Maximum load:** LikoGuard™ L: 272kg (600lbs.)  
LikoGuard™ XL: 363kg (800lbs.)

⚠ The entire lift system's total maximum load is always determined by the product of the system that has the lowest specified maximum load.

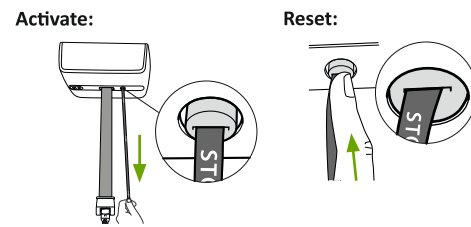
### ⓘ IMPORTANT!

This quick reference guide does not replace the lift's user manual. Liko™ user manuals can be downloaded from [www.liko.com](http://www.liko.com).

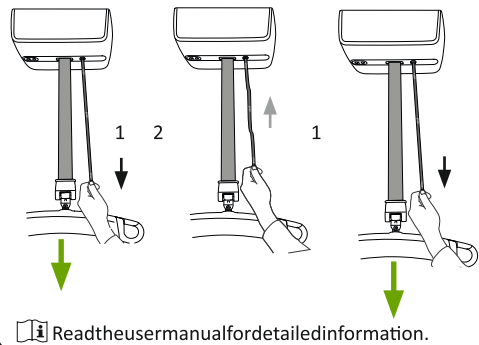
### 1 Hand Control



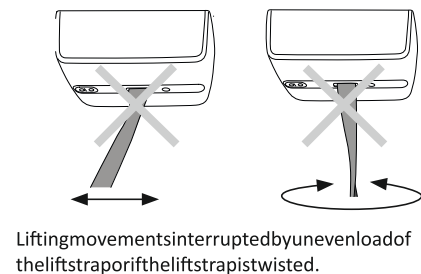
### 2 Emergency Stop



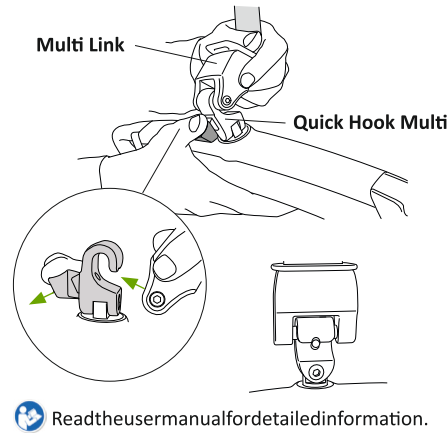
### 3 Mechanical Emergency Lowering



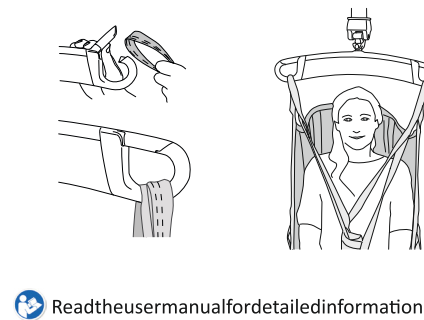
### 4 Limit Switch



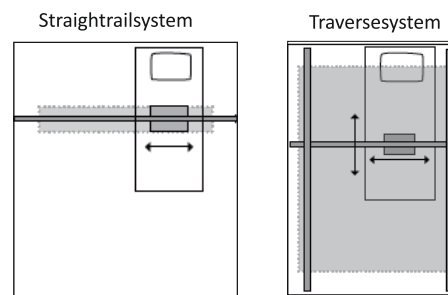
### 5 Quick-release Hook



### 6 Latches



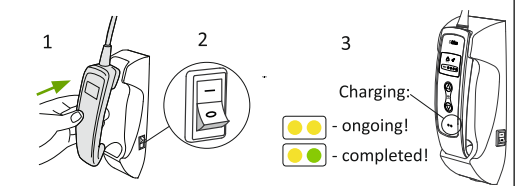
### Lifting area



Lifting area is highlighted in gray under the current lift system.

ⓘ Read the user manual for detailed information.

### Charging with wall charger



The lift can not be charged with the emergency stop activated.

ⓘ Read the user manual for detailed information.

### Ergonomics

- Never lift manually—let the lift do the lifting.
- Take it easy. Work calmly and methodically.
- Don't strain your back! Work in a walking stance with your back straight.
- Use the bed's raising and lowering functions.
- Reduce the lever effect. Work close to the patient and the lift.

### Cleaning

When necessary, clean the lift with a moist cloth. For detailed information regarding cleaning and disinfection, refer to the user manual.

ⓘ Read the user manual for detailed information.

### Simple Troubleshooting

Check to ensure that:

- the emergency stop is not activated, if the emergency stop is activated, reset it, see 2
- the battery is charged

### Other Quick Reference Guides

Quick reference guides for Liko™ lifts and Liko™ slings are available for downloading from [www.liko.com](http://www.liko.com).

(C) 2014. Liko & DAB. All Rights Reserved.



[www.hill-rom.com](http://www.hill-rom.com) / [www.liko.com](http://www.liko.com)

Liko AB  
Nedrevägen 100  
SE-97592 Luleå, Sweden

Enhancing outcomes for patients and their caregivers:



7EN121501 Rev.1